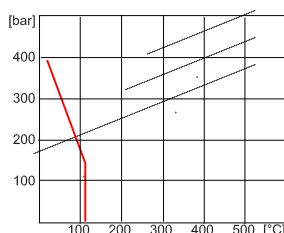
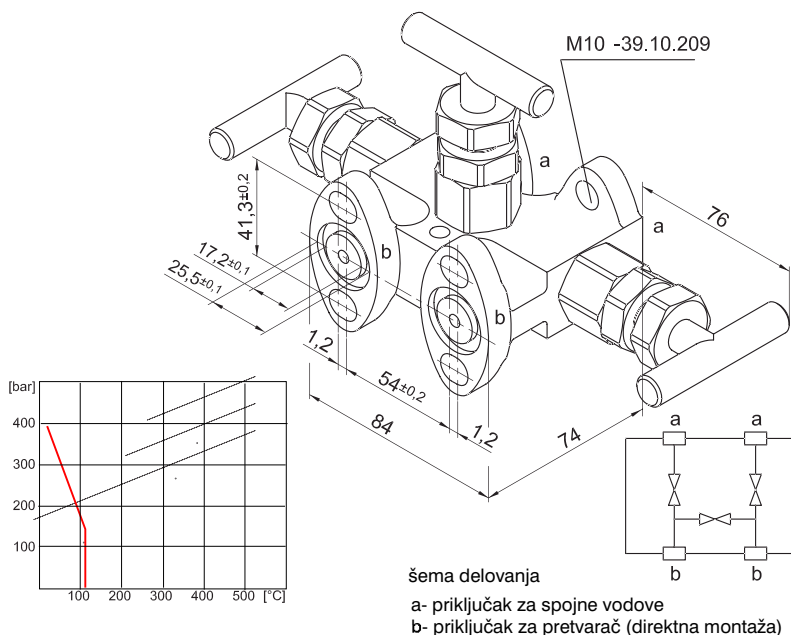


ARMATURA I PRIBOR ZA MERENJE PRITISKA, PROTOKA I NIVOA

2

TROKRAKI BLOK VENTIL

prirubnički priključak prema slici otvor sedišta: 5
 nazivni pritisak: NP 100/ NP 400
 za temperaturu do 100 °C 120 °C
 materijal vretena: nerdjajući čelik
 materijal sedišta: nerdjajući čelik
 kataloški broj: 39.10.209



šema delovanja
 a- priključak za spojne vodove
 b- priključak za pretvarač (direktna montaža)

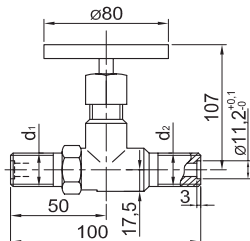


ZAUSTAVNI VENTILI

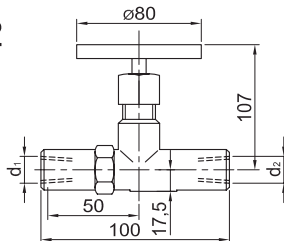
PREMA DIN 19208 I DIN 19207

Naziv	Nazivni pritisak	Dijagram sl. 6	Materijal kućišta	Materijal zaptivke	Priključci		Kat. broj	Otvor sedišta a	Sl. br.
					d ₁	d ₂			
Zaustavni ventil	PN 250	C	.4171 (prokron 2)	grafit	G ½		39.00.116	6	1
	PN 160	B	.4171 (prokron 1)	teflon	½ ... 14 NPT (F)		39.00.115		2
Manometarski ventil	PN 250	C	.4171 (prokron 2)	grafit	G ½		39.00.120.2	6	3
					M20x1.5		39.00.120.3		
Kosi zaustavni ventil	PN 160	A	.1330 (ugljenični čelik)	grafit	G ½	Nastavak za varenje ø14x2	39.00.050	10	4
Visokopritisni zaustavni ventili	PN 320	D	.7400 (13 CrMo 44)	grafit	Nastavak za varenje ø24 x7,1 prema DIN 2559 -22	Nastavak za varenje ø 14 x2,51 prema DIN 2559 -22	39.00.132	8	5

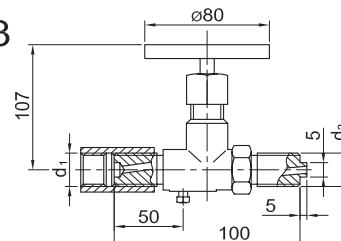
Sl. 1



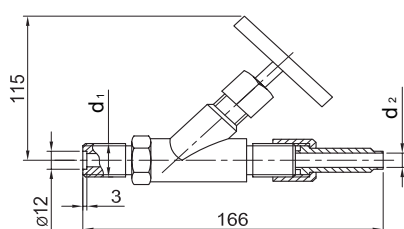
Sl. 2



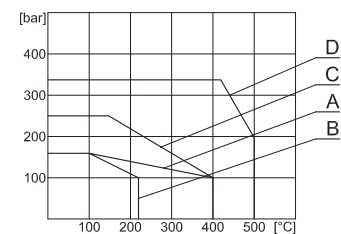
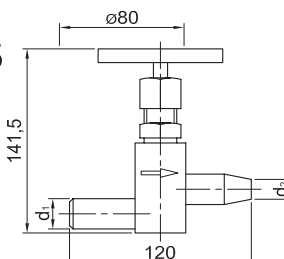
Sl. 3



Sl. 4



Sl. 5



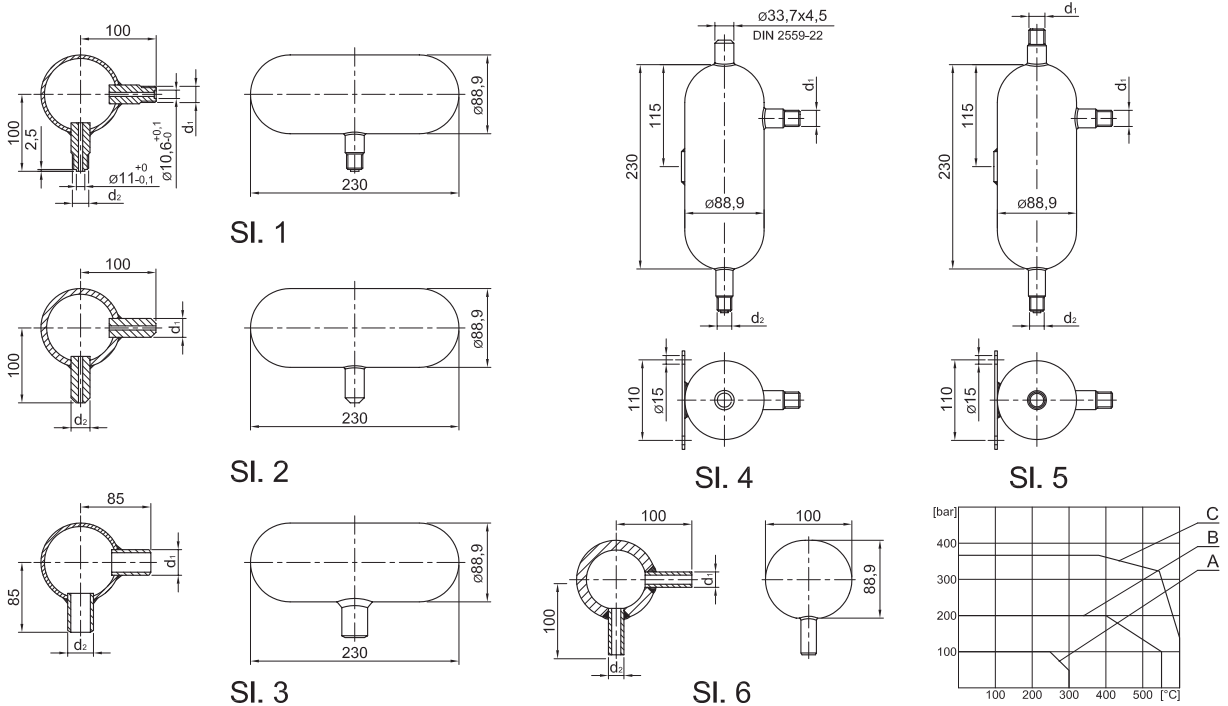
KONDENZNI, ODZRAČNI I ODMULJNI LONCI



PREMA DIN 19211

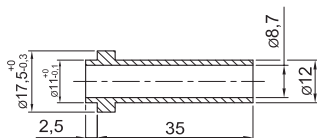
Naziv	Ma x. pogonski pritisak	Dijagram sl. 7	Materijal	Priključci		Zapremina cm ²	Kat.broj	Sl br
				d ₁	d ₂			
Kondenzni lonac (protok)	100 bar	A	.1215 (ugljenicni celik)	G 1/2 prema DIN 1 9207 FORMR	G 1/2 prema DIN 19207 FORMV	940	39.00.305	1
	200 bar	B	.7400 (13CrMo 44)	za zavarivanje na cev Ø24 x 7, 1 prema DIN 255 9-22		830	39.00.309	2
	370 bar	C	.7401 (10CrMo 910)	za zavarivanje na cev Ø33,7 x 4, 5 prema DIN 2559-22		110	39.00.309.2	6
Kondenzni lonac (nivo)				za zavarivanje na cev Ø33,7 x 4, 5 prema DIN 2559-22			39.00.505	3
Odmuljni lonac meraca nivoa	100 bar	A	Č.1215 (ugljenicni celik)	G 1/2 prema DIN 1 9207 FORMR	G 1/2 prema DIN 19207 FORMV	940	39.00.404	4
Odzračno -odmuljni lonac (protok)				G 1/2 prema DIN 1 9207 FORMR	G 1/2 prema DIN 19207 FORMV		39.00.405	5

2

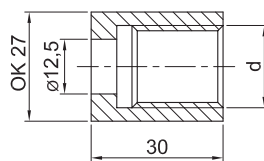


PRIBOR ZA MERENJE PROTOKA

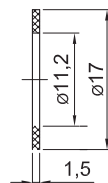
Prikljunica prema DIN 19207



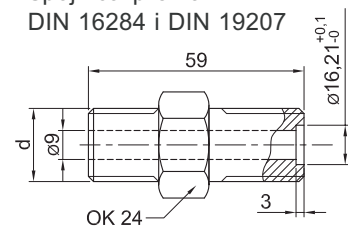
Holender matica prema DIN 16284



Zaptivka prema DIN 19207



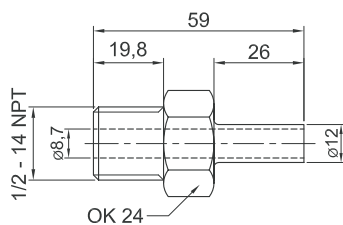
Spojница prema DIN 16284 i DIN 19207



Materijal	Kat. broj	Materijal	Kat. broj		Materijal	Kat. broj	Materijal	Kat. broj	
			d=G½	d=M20x1,5				d=3/8-18 NP T	d=3/8-18 NP T
. 1330	39.00.680	. 1330	39.00.683	39.00.685	Testit-unit	39.00.687	W.Nr. 1.0402	39.00.623	39.00.626
. 4572	39.00.681	. 1330*	39.00.684	39.00.686	Cu-99,5	39.00.688	W.Nr. 1.4541	39.00.624	39.00.627

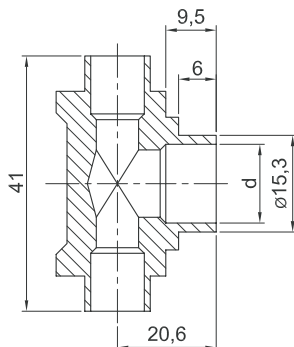
PRIBOR ZA MERENJE PROTOKA, PRITISKA I NIVOVA

Spojica pretvarača diferencijalnog pritiska



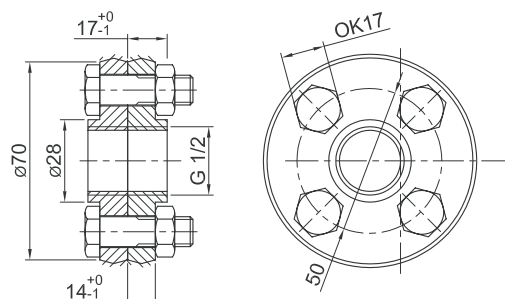
Materijal	Kat. broj	
	d=G½	d=M20x1,5
. 1330	39.00.683	39.00.685
. 1330	39.00.684	39.00.686

T-komad za zavarivanje cevi prema DIN 19210



Materijal	d	Kat. broj
. 1330	ø12,3	39.00.645
. 1330	ø12,3	39.00.644

Sklop priрубnica G 1/2 prema DIN 19207

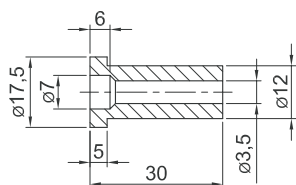


Kat. broj 39.00.306

Max. pritisak 160 bar kod 100 C
Max. pritisak 100 bar kod 350 C

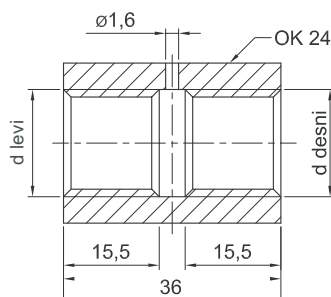
PRIBOR ZA MERENJE PRITISKA

Prikljunica prema DIN 16284



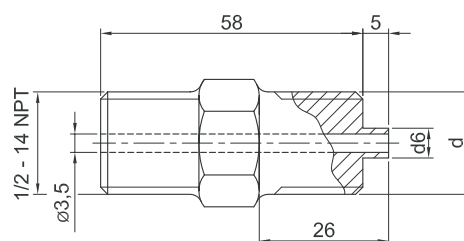
Materijal	Kat.broj
. 1330	39.00.656
. 4572	39.00.657

Dvostruka matica prema DIN 16283



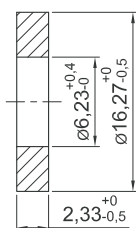
Materijal	Kat.broj	
	d=G½	d=M20x1,5
. 1330	39.00.653	39.00.659

Spojica pretvarača pritiska



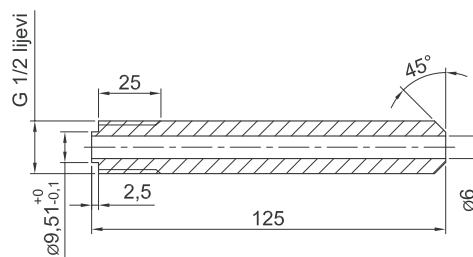
Materijal	Kat.broj	
	d=G½	d=M20x1,5
. 1330	39.00.629	39.00.632
. 4572	39.00.630	39.00.633

Zaptivka



Materijal	Kat.broj
tesnit - unit	39.00.665
Cu-99.5	39.00.666

Nastavak za zavarivanje



Materijal	Kat.broj
. 1330	39.00.670
. 4572	39.00.671